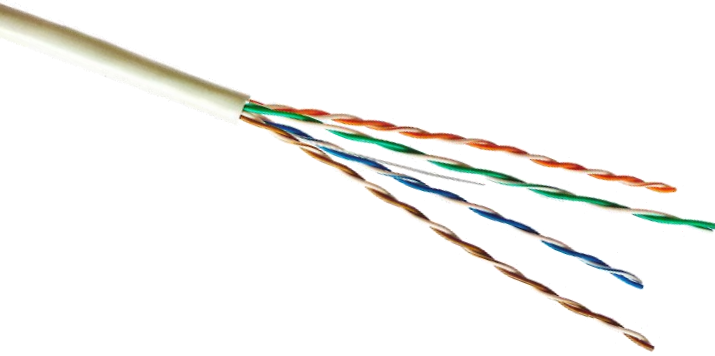


U/UTP cable, 4x2x24AWG, Category 5E, 100 MHz, Euroclass E_{ca} , 305 m/box



Item Code: CX-5E-U-PVC-ECA



Features:

- supports Gigabit Ethernet
- Pure copper cores
- unshielded cable with PVC sheath
- complies with the Construction Products Regulation (EU No. 305/2011) and reaction to fire requirements (EN 50575: 2014+A1: 2016)
- independent Certification (DELTA)

Application:

- 10BASE-T; 100BASE-TX; 1000BASE-T
- ISO/IEC 11801, ANSI/TIA/EIA-568-A
- phone networks, CCTV systems
- for indoor use

Cable specifications

Inner Conductor	solid copper conductors, 24AWG	
Insulation	high density polyethylene, Ø 0,9mm	
Construction	4 twisted pairs	
Sheath	PVC (gray, RAL 7035)	
Overall Diameter	5,0±0,3mm	
Minimum bending radius	40mm	
Weight	28,5kg/km	
Temperature range	operation	-20 °C to +70 °C
	installation	0 °C to +50 °C
Max. tensile load	100N	
Reaction to fire	E _{ca}	
Flame retardant	IEC 60332-1-2	

Electrical parameters at 20°C

Wave impedance	100 ± 15Ω
Capacitance	< 5,6nF/100 m
Nominal Velocity of Propagation (NVP)	69%
DC Resistance	9,38Ω/100m
DC Resistance unbalance	2,5%
Delay skew	≤45ns/100m
Voltage	48VDC

U/UTP cable, 4x2x24AWG, Category 5E,
100 MHz, Euroclass E_{ca} , 305 m/box

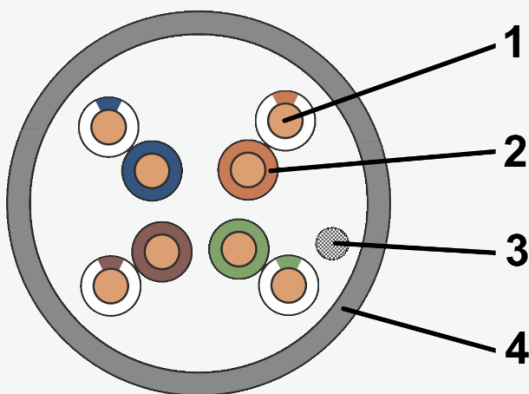


Item Code: CX-5E-U-PVC-ECA

Technical Performance (100m)

Frequency, MHz	Return loss, dB	Attenuation, dB	NEXT, dB	Delay, ns	PS-NEXT, dB	ELFEXT, dB	PS-ELFEXT, dB
1	20	2	65,3	570	62,3	64	61
4	23	4,1	56,3	552	53,3	52	49
8	24,5	5,8	51,8	546,73	48,8	45,9	42,9
10	25	6,5	50,3	545,38	47,3	44	41
16	25	8,2	47,2	543	44,4	39,9	36,9
20	25	9,3	45,8	542,05	42,8	38	35
25	24,3	10,4	44,3	541,2	41,3	35,8	33
31,25	23,6	11,7	42,9	540,44	39,9	34,1	31,1
62,5	21,5	17	38,4	538,55	35,4	28,1	25,1
100	20,1	22	35,3	537,6	32,3	24	21

Cross-section diagram:



1. Inner Conductor;
2. Insulation;
3. Rip Cord;
4. Sheath.

This document is subject to change without notice. The current version of datasheet is available in our website.