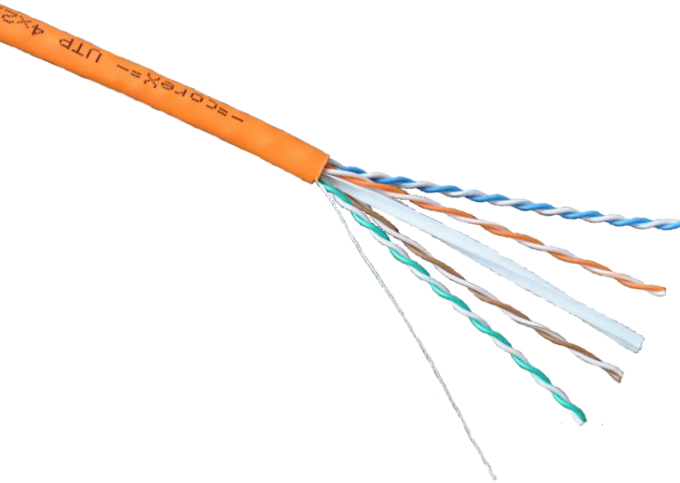


**U/UTP cable, 4x2x0,55mm, Category 6, 400 MHz,
Euroclass B2_{ca} , 305 m/reel in a box**



Item Code: CX-6-U-LSZH-B2CA



Features:

- Pure copper cores
- unshielded cable with halogen-free (FR-LSZH) sheath
- pairs separated by a cross filler
- complies with the Construction Products Regulation (EU No. 305/2011) and reaction to fire requirements (EN 50575: 2014+A1: 2016)
- supports Gigabit Ethernet
- independent Certification (DELTA)

Application:

- 10BASE-T; 100BASE-TX; 1000BASE-T
- ISO/IEC 11801, ANSI/TIA/EIA-568-A
- phone networks, CCTV systems
- for indoor use

Cable specifications

Inner Conductor	solid copper conductors, 0,55mm (23AWG)	
Insulation	high density polyethylene, Ø 0,98mm	
Construction	4 twisted pairs	
Sheath	FR-LSZH (orange, RAL 2003)	
Overall Diameter	6,5±0,4mm	
Minimum bending radius	60mm	
Weight	48kg/km	
Temperature range	operation	-20°C to +70°C
	installation	0°C to +60°C
Max. tensile load	90N	
Reaction to fire	B2 _{ca} – s1, d1, a1	
Flame retardant	IEC 60332-1-2	
Smoke performance	IEC 61034-1, IEC 61034-2	
Halogen acidity	IEC 60754-2	

Electrical parameters at 20°C

Wave impedance	100 ± 15Ω
Capacitance unbalance (pair to ground)	≤330pF/100m
Nominal Velocity of Propagation (NVP)	69%
DC Resistance	9,38Ω/100m
DC Resistance unbalance	5%
Delay skew	≤45ns/100m
Voltage	60VDC
Insulation resistance	≥5000MΩ/km (500VDC/1min Charge)

U/UTP cable, 4x2x0,55mm, Category 6, 400 MHz,
Euroclass B2_{ca} , 305 m/reel in a box

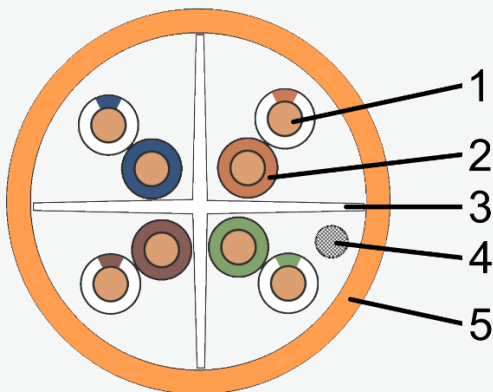


Item Code: CX-6-U-LSZH-B2CA

Technical Performance (100m)

Frequency, MHz	Return loss, dB	Attenuation, dB	NEXT, dB	PS-NEXT, dB	ELFEXT, dB	PS-ELFEXT, dB
1	20	2,03	74,3	72,3	67,8	64,8
4	23	3,78	65,3	63,3	55,8	52,8
8	24,5	5,32	60,8	58,8	49,7	46,7
10	25	5,95	59,3	57,3	47,8	44,8
16	25	7,55	56,2	54,2	43,7	40,7
20	25	8,47	54,8	52,8	41,8	38,8
25	24,3	9,51	53,3	51,3	39,8	36,8
31,25	23,6	10,67	51,9	49,9	37,9	34,9
62,5	21,5	15,38	47,7	45,4	31,9	28,9
100	20,1	19,8	44,3	42,3	27,8	24,8
200	18	28,98	39,8	37,8	21,8	18,8
250	17,3	32,85	38,3	36,3	19,8	16,8

Cross-section diagram:



1. Inner Conductor;
2. Insulation;
3. Cross filler;
4. Rip Cord;
5. Sheath.

This document is subject to change without notice. The current version of datasheet is available in our website.