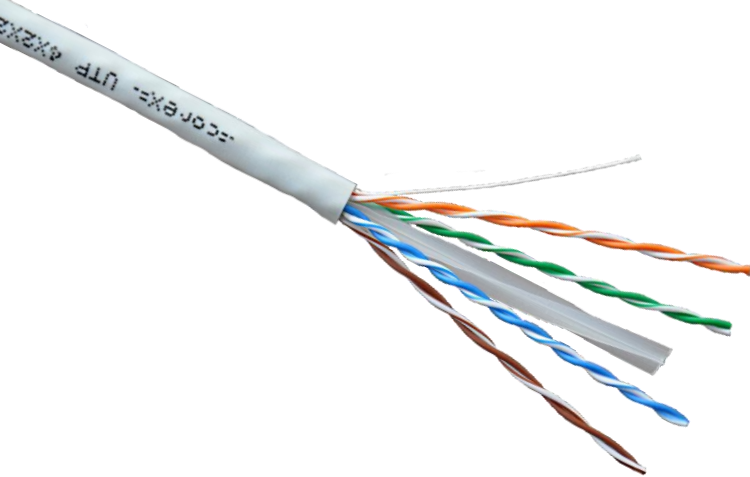


U/UTP cable, 4x2x23AWG, Category 6, 250 MHz, Euroclass E_{ca}, 305 m/box



Item Code: CX-6-U-PVC-ECA



Features:

- Pure copper cores
- unshielded cable with PVC sheath
- pairs separated by a cross filler
- complies with the Construction Products Regulation (EU No. 305/2011) and reaction to fire requirements (EN 50575: 2014+A1: 2016)
- supports Gigabit Ethernet
- independent Certification (DELTA)

Application:

- 10BASE-T; 100BASE-TX; 1000BASE-T
- ISO/IEC 11801, ANSI/TIA/EIA-568-A
- phone networks, CCTV systems
- for indoor use

Cable specifications

Inner Conductor	solid copper conductors, 23AWG	
Insulation	high density polyethylene, Ø 0,95mm	
Construction	4 twisted pairs	
Sheath	PVC (gray, RAL 7035)	
Overall Diameter	6,0±0,3mm	
Minimum bending radius	65mm	
Weight	36,03kg/km	
Temperature range	operation	-20°C to +70°C
	installation	0°C to +60°C
Max. tensile load	110N	
Reaction to fire	E _{ca}	
Flame retardant	IEC 60332-1-2	

Electrical parameters at 20°C

Wave impedance	100 ± 15Ω
Capacitance	<5,6nF/100m
Capacitance unbalance (pair to ground)	≤330pF/100m
Nominal Velocity of Propagation (NVP)	69%
DC Resistance	9,38Ω/100m
DC Resistance unbalance	2,5%
Delay skew	≤45ns/100m
Voltage	60VDC
Insulation resistance	≥5000MΩ/km (500VDC/1min Charge)
Voltage	60VDC

U/UTP cable, 4x2x23AWG, Category 6, 250 MHz, Euroclass E_{ca} , 305 m/box

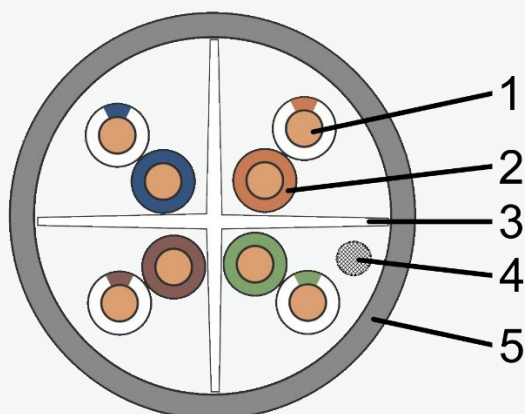


Item Code: CX-6-U-PVC-ECA

Technical Performance (100m)

Frequency, MHz	Return loss, dB	Attenuation, dB	NEXT, dB	PS-NEXT, dB	ELFEXT, dB	PS-ELFEXT, dB
1	19,1	3	65	62	64,2	61,2
4	21	3,5	64,1	61,8	52,1	49,1
8	21	5	59,4	57	46,1	43,1
10	21	5,5	57,8	55,5	44,2	41,2
16	20	7	56,6	52,2	40,1	37,1
20	19,5	7,9	53,1	50,7	38,2	35,2
25	19	8,9	51,5	49,1	36,2	33,2
31,25	18,5	10	50	47,5	34,3	31,3
62,5	16	14,4	45,1	42,7	28,3	25,3
100	14	18,6	41,8	39,3	24,2	21,2
200	11	27,4	36,9	34,3	18,2	15,2
250	10	31,1	35,3	32,7	16,2	13,2

Cross-section diagram:



1. Inner Conductor;
2. Insulation;
3. Cross filler;
4. Rip Cord;
5. Sheath.

This document is subject to change without notice. The current version of datasheet is available in our website.